

WMHVC - 50 to 300 - [available in sizes 50mm to 300mm]

Water meter conforms to OIML R49 Class 2, its operation is helical vane.

Body is constructed from cast iron and is baked powder coated internally and externally.

The cyclometer is hermetically sealed and can rotate through 360 degrees.

Pulse devices can be fitted after installation.

Pulse value for sizes 50 mm– 100mm is 1 pulse = 100 litres

Larger sizes 150mm - 300mm is 1 pulse = 1,000 litres

Ideally suited for potable water and industrial applications

Installation can be either horizontal or vertically up to a maximum water temperature of 30°C.

A hot water version is available for water temperatures up to 90°C

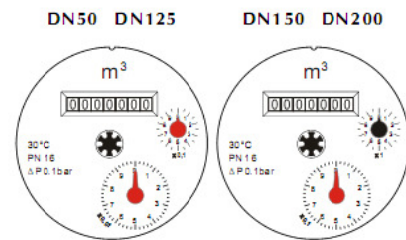
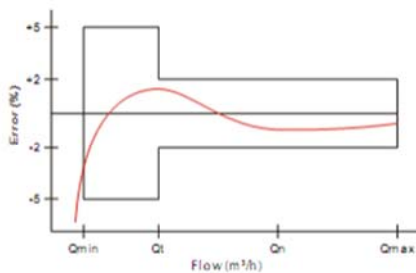
The measuring element is easily removed.

Flanges are Table D to AS 2129

MODEL WMHVC - 50 to 300



Accuracy Curve



Description	Units	Technical Data							
		50	80	100	150	200	250	300	
Normal Size	mm	50	80	100	150	200	250	300	
Maximum flow (Q max)	m³/hr	30	80	120	300	500	800	1200	
Continuous flow (Q nom) *	m³/hr	15	40	60	150	250	400	600	
Transitional flow (Q t)	m³/hr	3.0	8.0	12.0	30.0	50.0	80.0	120.0	
Minimum flow (Q min)	m³/hr	0.45	1.2	1.8	4.5	7.5	12.0	18.0	
Minimum reading	l	0.01	0.01	0.01	0.01	0.01	0.01	0.01	
Maximum reading	m³	9999999.99	9999999.99	9999999.99	9999999.99	9999999.99	9999999.99	9999999.99	
Working pressure	Mpa	1.6	1.6	1.6	1.6	1.6	1.6	1.6	
Pressure loss at (Q max)	Mpa	≤0.1	≤0.1	≤0.1	≤0.1	≤0.1	≤0.1	≤0.1	
Length (L)	mm	311	225	250	300	350	400	450	
Width (W)	mm	172	200	220	250	350	400	450	
Height (H)	mm	247	264	271	301	358	413	463	
Temperature Cold	°C	30°C	30°C	30°C	30°C	30°C	30°C	30°C	

* Indicates the size of the water meter