



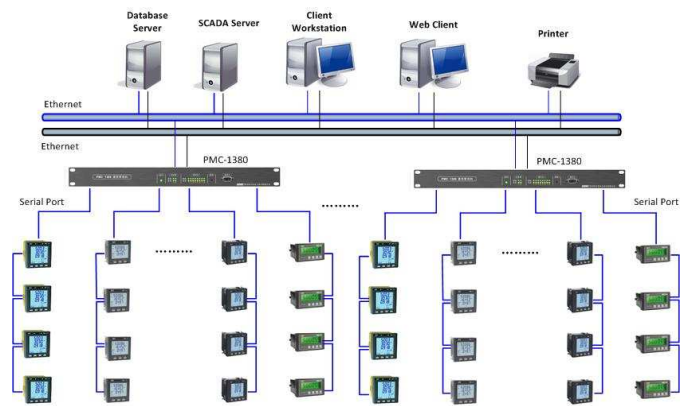
## Overview

The PMC-1380 is the ideal equipment for connecting RS-232 or RS-485 enabled serial devices to an IP-based Ethernet LAN, making it possible to access serial devices over your Ethernet network for control applications. The PMC-1380 has been specifically designed with industrial automation in mind and therefore provides un-surpassed performance and reliability even under the harshest industrial environments. The PMC-1380 comes standard with extended operating temperature range and provides 3kV isolation protection for its RS-485 ports.

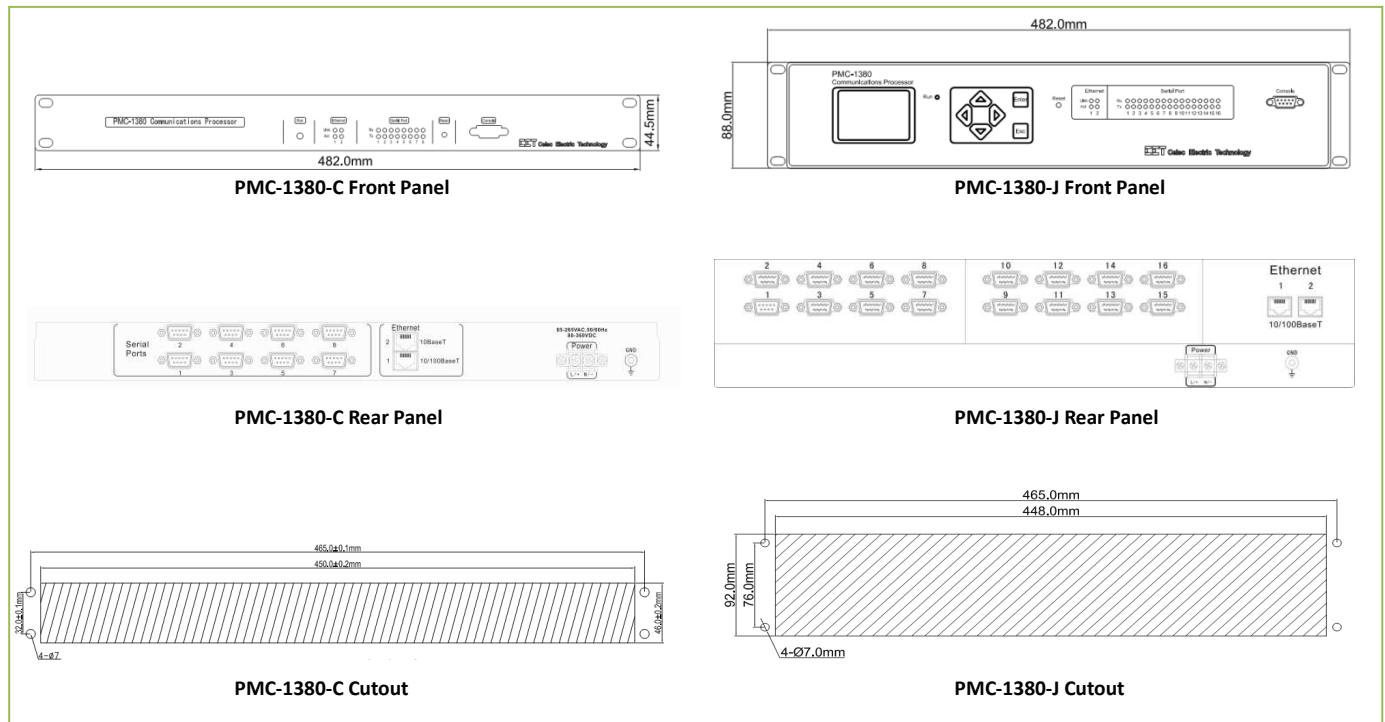
## Features

- Redundant 10/100BaseT Ethernet ports
- Eight or sixteen serial ports supporting different combinations of RS-232 or RS-485 ports
- Automatic Data Direction Control
- Built-in 15 KV ESD protection for all serial signals
- 3kV isolation protection, specifically designed to withstand the harshest industrial environments, for all RS485 Ports
- Simple port configuration via web interface
- Standard 19-inch rack-mount

## Application



## Device Views and Dimensions



## Technical Specifications

Ethernet Ports (1, 2)	
Number	2
Connector	RJ45
Port 1	10/100BaseT
Port 2	10BaseT
Serial Ports	
Number	8 or 16
Type	RS-232 (DTE) / RS-485
Connector	DB9 Female
Comm. Parameters	
Data bits	5, 6, 7, 8
Stop bits	1, 1.5, 2
Parity	None, Even, Odd
Baudrate	300 to 38,400 bps
Console Port	
Type	RS-232 (DTE)
Connector	DB9 Female
LED Indicators	
Run	Green - System running normally
Ethernet	Link - Green ACT - Yellow
Serial Port	Tx - Yellow Rx - Green
Power Supply (L+, N-, GND)	
Standard	95 to 250VAC/DC ±10%, 50/60Hz
Burden	11W
Protection	
ESD Protection	15 kV for all serial signals
Isolation Protection	3kV for RS-485 ports
Environmental Conditions	
Operating Temp.	-25°C to +70°C
Storage Temp.	-40°C to 85°C
Humidity	5% to 95% non-condensing
Atmospheric pressure	70 kPa to 106 kPa
Mechanical Characteristics	
Housing	Aluminum Alloy
Unit Dimensions	PMC-1380-C: 482×236.5×80mm PMC-1380-J: 482×196.0×44.5mm
Shipping Weight	PMC-1380-C: 3.94kg PMC-1380-J: 7.90kg
Shipping Dimensions	PMC-1380-C: 570×300×145mm PMC-1380-J: 655×365×250mm



**CETA Australia Pty Ltd**  
 38b Douglas Street, Milton QLD 4064  
 P.O. Box 1486, Milton QLD 4064  
 t: +61 7 3535 9600  
 f: +61 7 3535 9601  
 e: sales@cetameter.com  
 cetameter.com

CET, PMC and PecStar are trademarks or registered trademarks of Ceiec Electric Technology Inc.  
 Other marks used herein are the property of their respective owners.  
 CET reserves the right to update the specifications without notification.

## Standards of Compliance

Safety Requirements		
Insulation	IEC 60870-3-1989	
Dielectric Test	2kV @ 1 minute	
Insulation Resistance	>100MΩ	
Impulse Voltage	5kV	
Electromagnetic Compatibility		
Electrostatic Discharge	IEC 870-2-1:1995 Level IV	
Radiated Fields	IEC 61000-4-3:1998 Level III	
Fast Transients	IEC 61000-4-4:1998 Level IV	
Surges	IEC 61000-4-5:2005 Level III	
Conducted Disturbances	IEC 61000-4-6:1998 Level III	
Magnetic Fields	IEC 61000-4-8:2001 Class IV	
Mechanical Tests		
Vibration Test	Response	IEC 255-21-1:1988 Level I
	Endurance	IEC 255-21-1:1988 Level I
Shock Test	Response	IEC 255-21-2:1988 Level I
	Endurance	IEC 255-21-2:1988 Level I
Bump Test	IEC 255-21-2:1988 Level I	

## Ordering Guide

Product Code		Description
PMC-1380 Communications Processor		
<b>Basic Function</b>		
C		8 ports, 1U, 19-inch rack-mount
J		16 ports, LCD display, 2U, 19-inch rack-mount
<b>Serial Port Selection for Model C (8-Port)</b>		
00-08		0xRS-232, 8xRS-485
<b>Serial Port Selection for Model J (16-Port)</b>		
00-16		0xRS-232, 16xRS-485
04-12		4xRS-232, 12xRS-485
<b>Power Supply</b>		
2		95-250VAC/DC, ± 10%
<b>Display</b>		
E		English Interface
PMC-1380	- J -	00-16 - 2 E
PMC-1380-J-00-16-2E (Example)		

## Your Local Representative

Revision Date: July 04, 2011